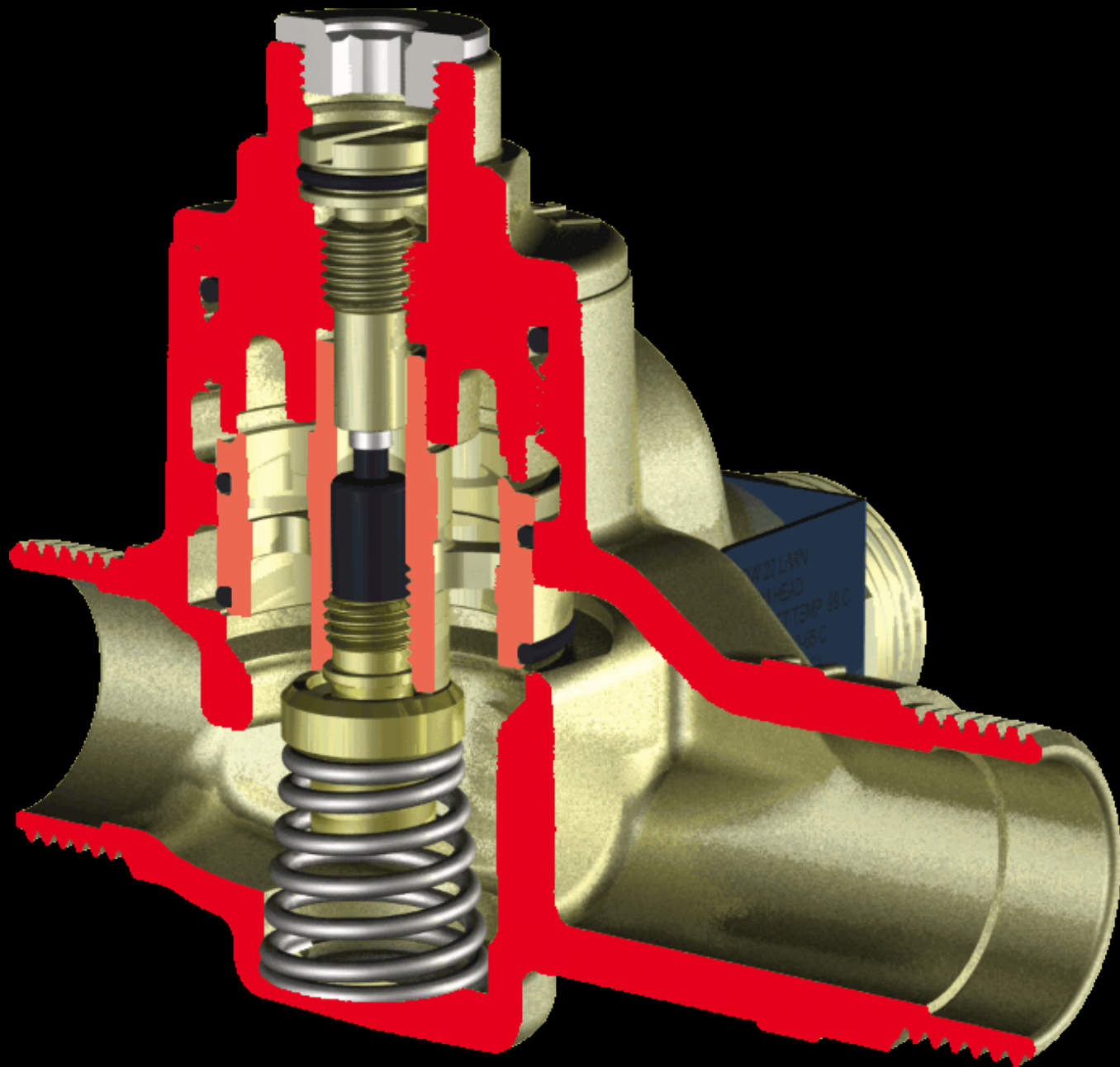
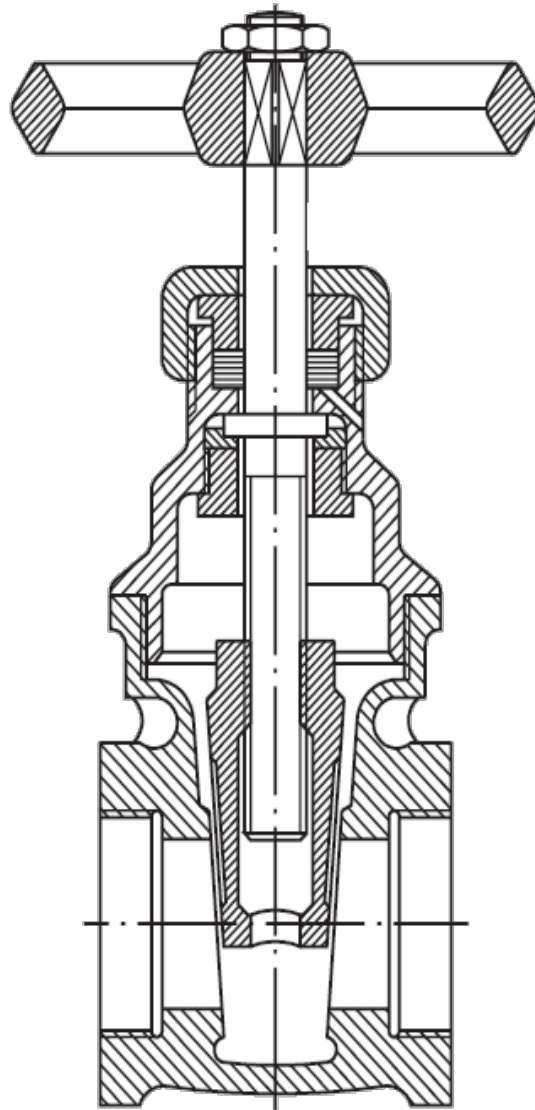
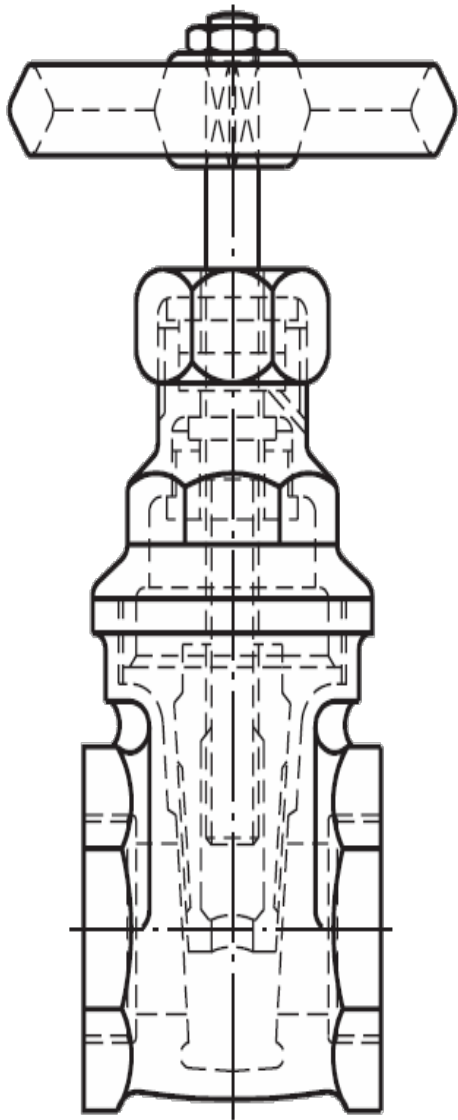


EXPRESSÃO GRÁFICA

CORTES E SEÇÕES







CORTE

Vista de uma peça seccionada por um plano imaginário convenientemente escolhido.



UTILIZAÇÃO DO CORTE

Peça com muitos detalhes em seu interior (furos por exemplo).

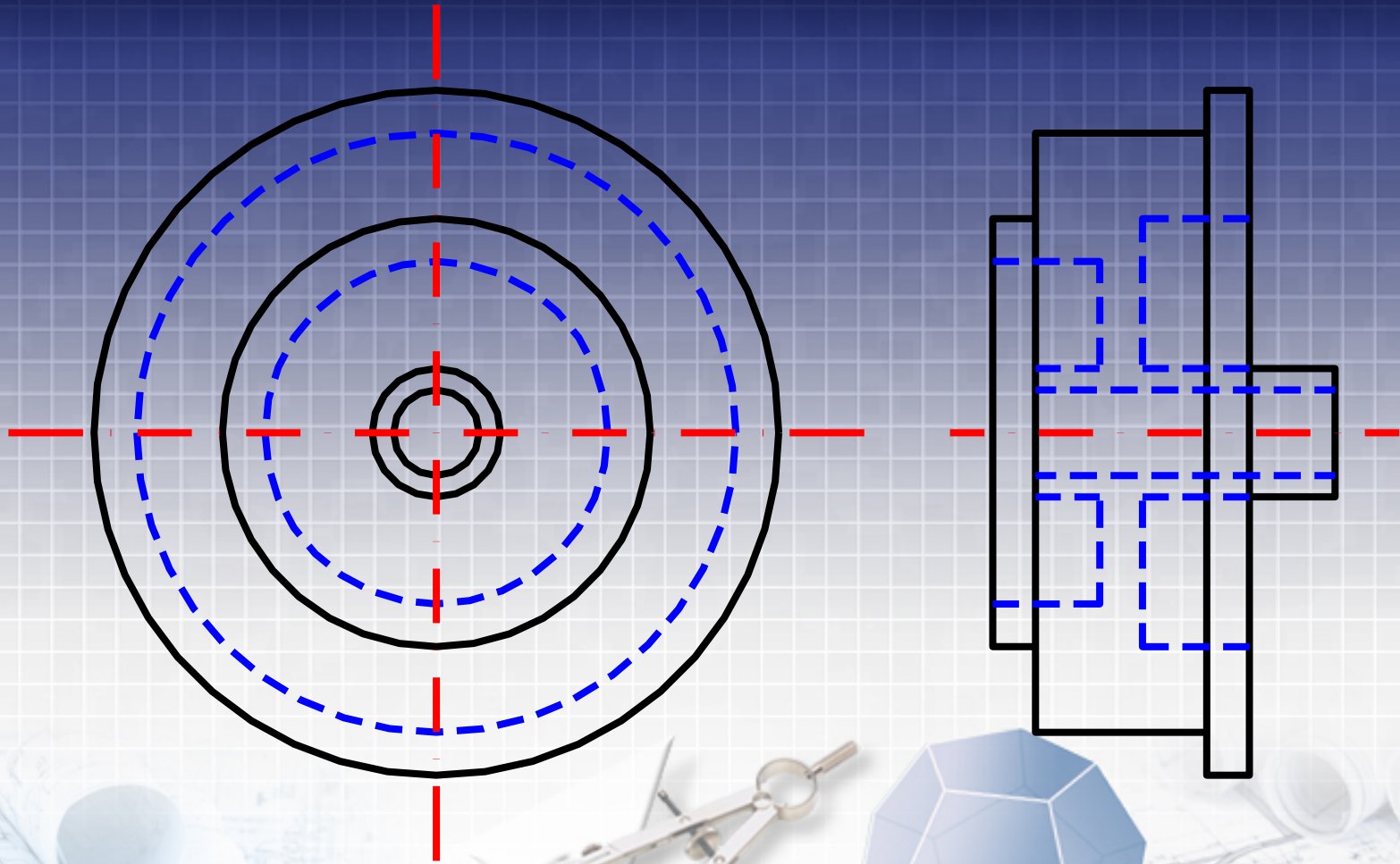


OBJETIVO DO CORTE

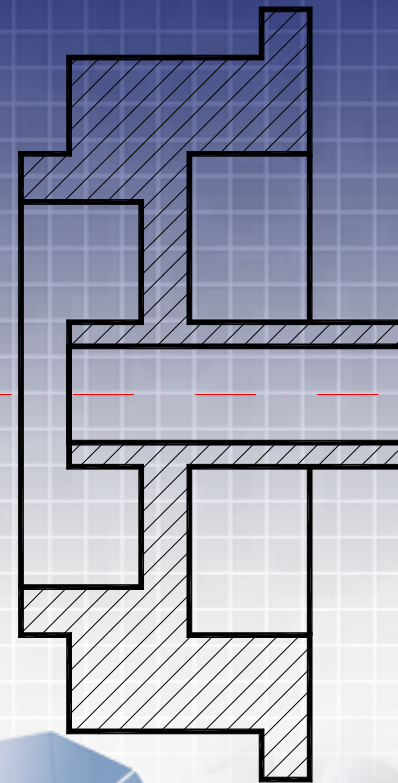
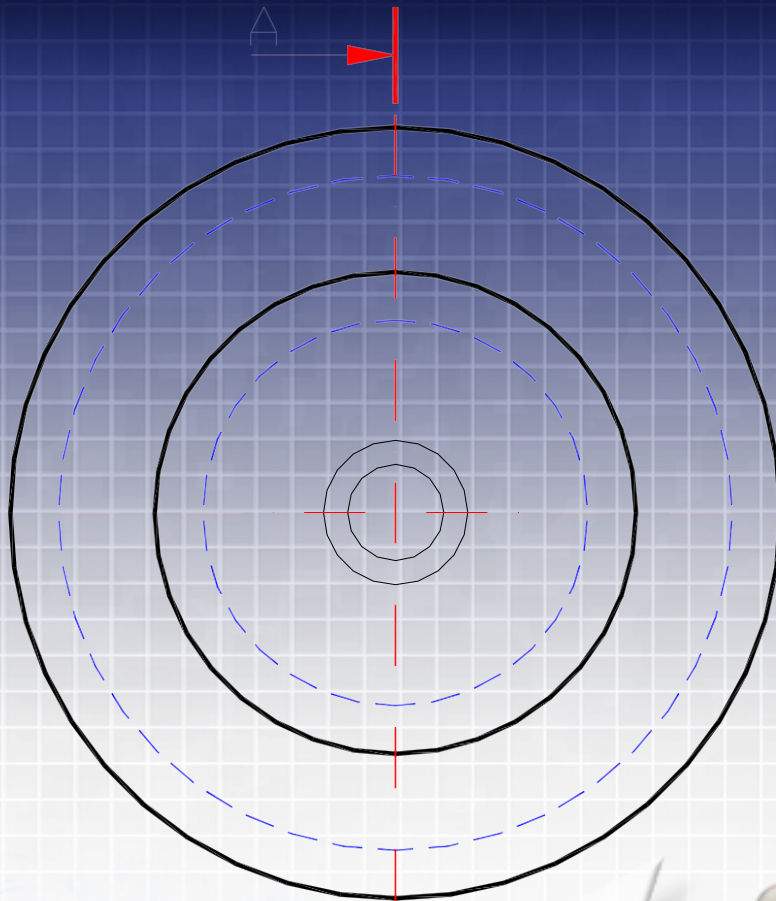
Evitar a abundância de linhas tracejadas que dificultam a rápida e correta compreensão do desenho.



OBJETIVO DO CORTE

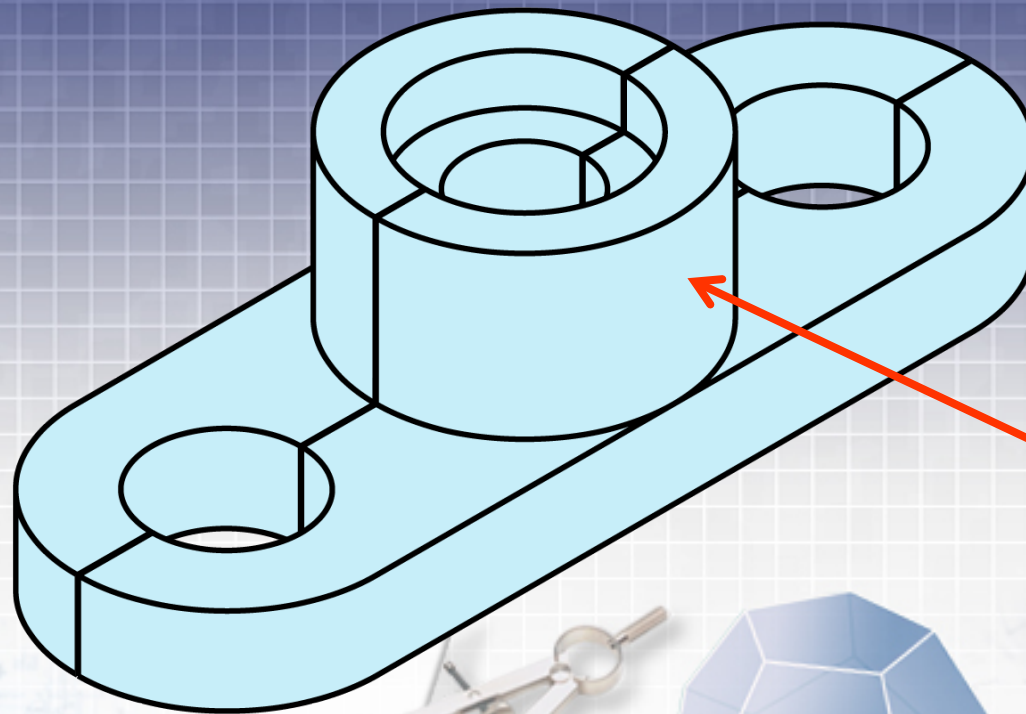


OBJETIVO DO CORTE



Corte A-A

CORTE E SEÇÃO



SEÇÃO



CORTE

É retirada a parte mais próxima do observador.

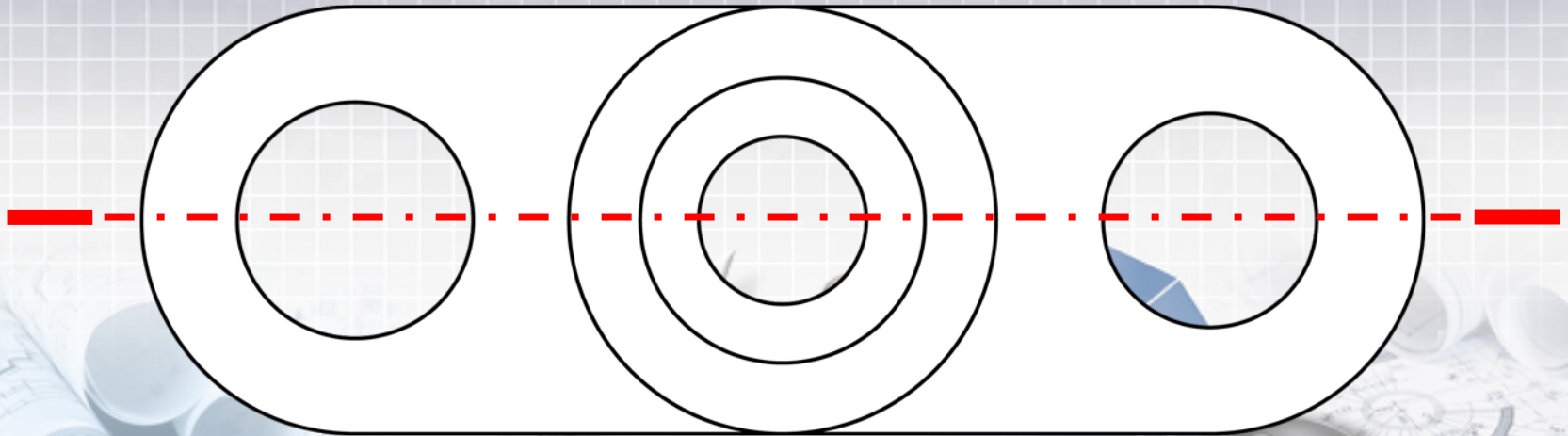
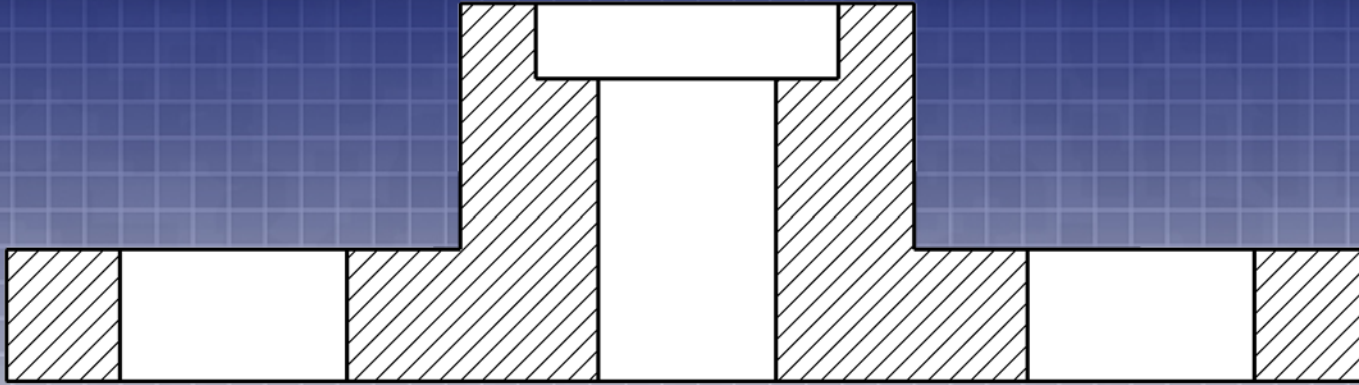


SEÇÃO

**Face cortada pelo plano.
Representada com hachuras.
(linhas finas a 45° com afastamento de 1,5mm)**

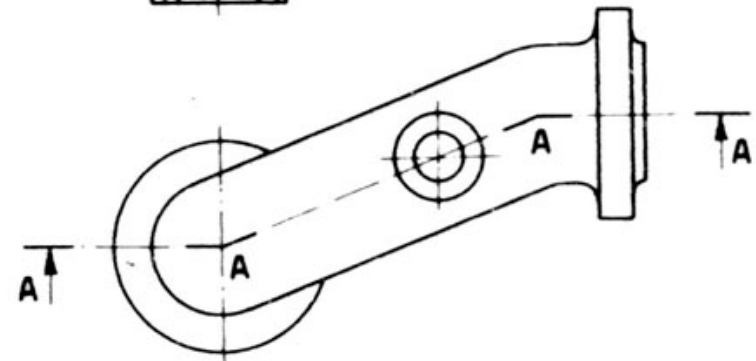
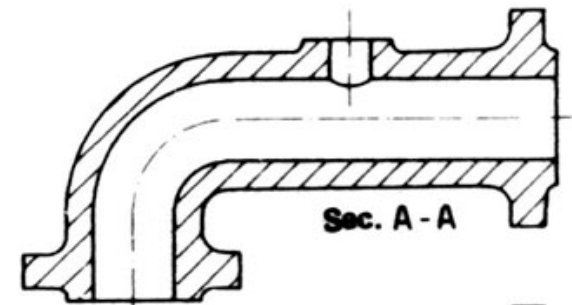
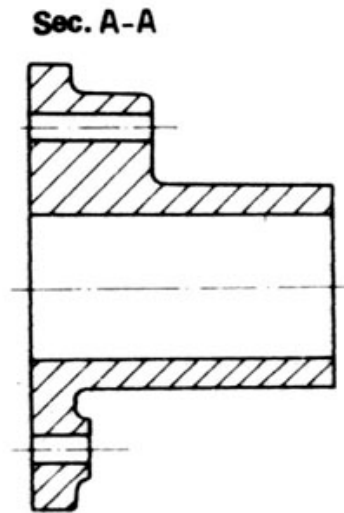
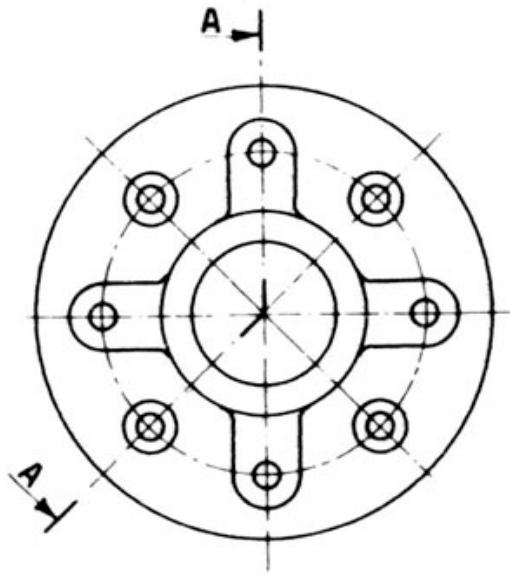


REPRESENTAÇÃO DE ACORDO COM O SISTEMA UTILIZADO

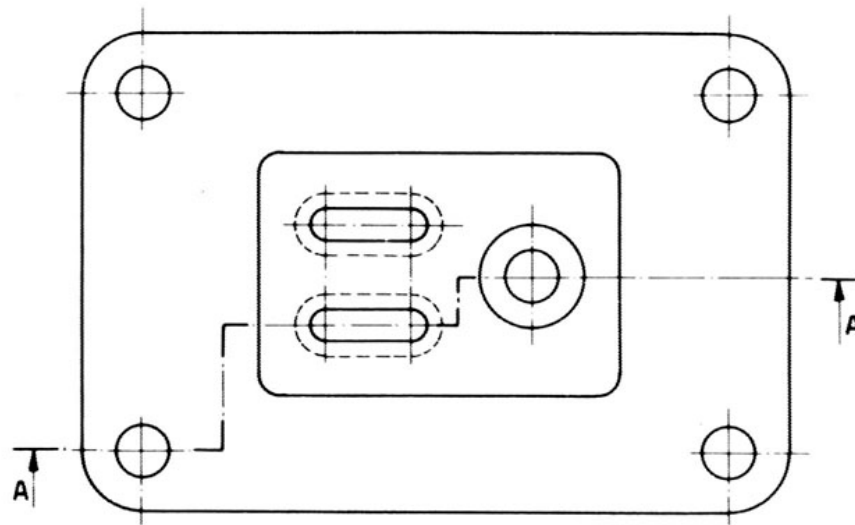
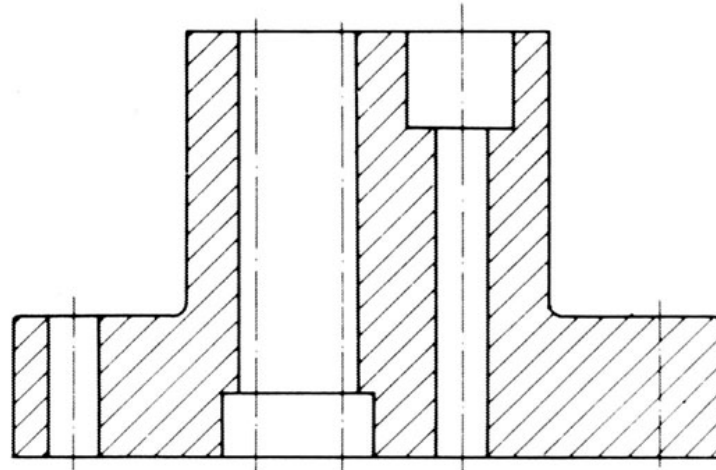


LINHAS DE CORTE

RETAS OU QUEBRADAS



Sec. A - A



OBSERVAÇÕES

- **Devem-se representar as linhas de corte na vista superior (de preferência) ou na vista frontal.**



OBSERVAÇÕES

- **As linhas ocultas (tracejadas) só são representadas quando forem de extrema necessidade à compreensão da peça.**



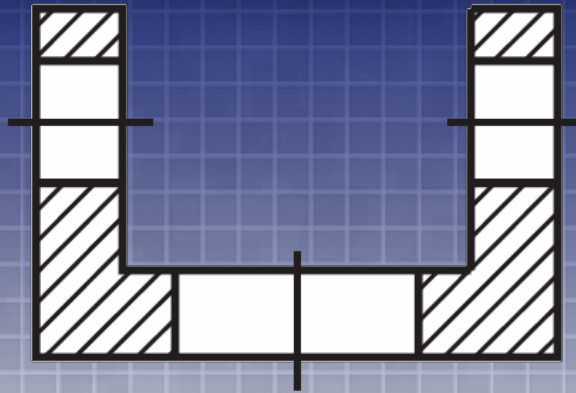
OBSERVAÇÕES

- **As linhas de corte devem ser suprimidas quando a sua posição se deduz com facilidade.**

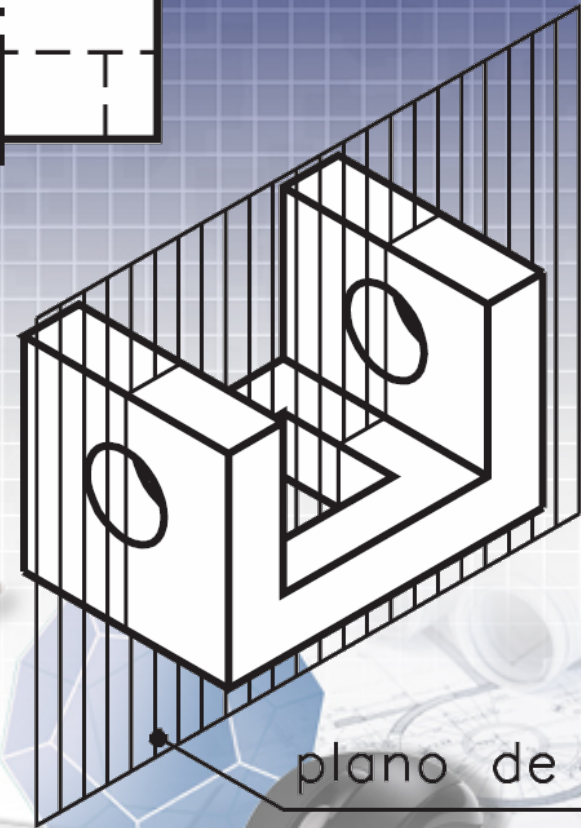
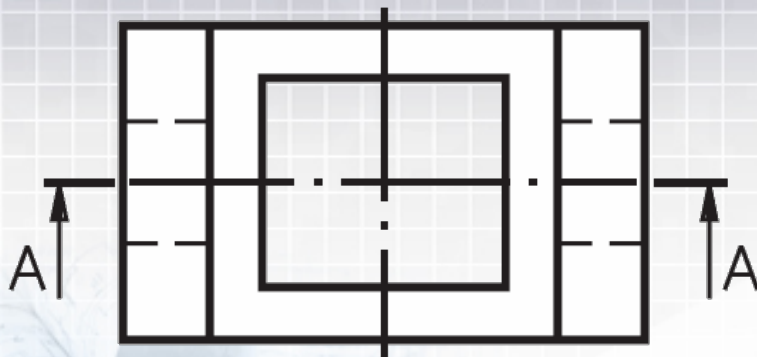
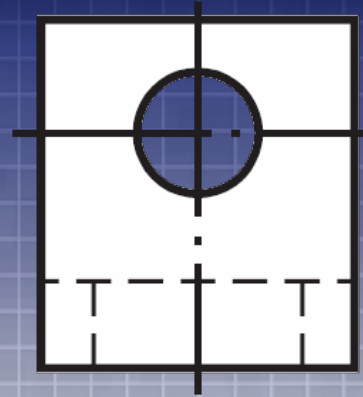


TIPOS DE CORTE

CORTE TOTAL



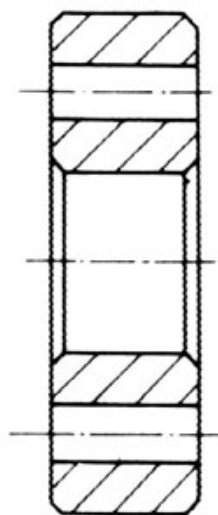
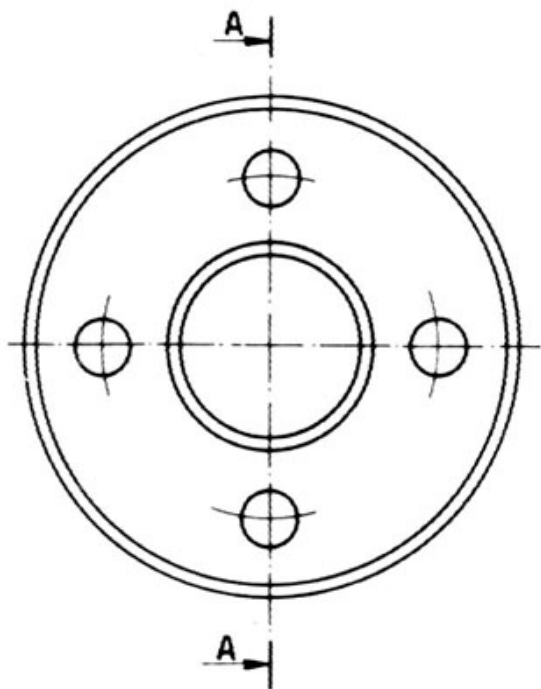
Corte AA



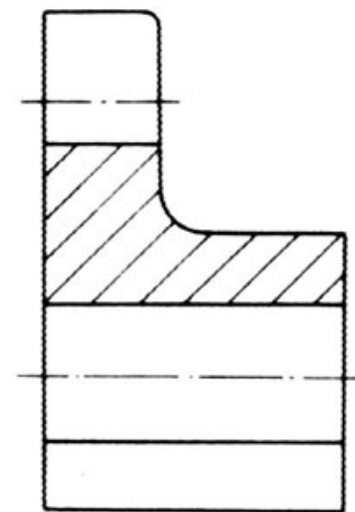
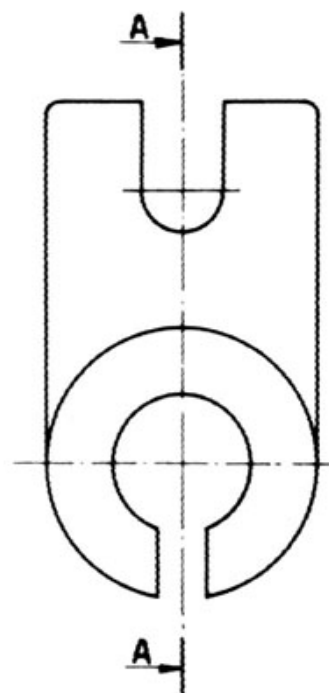
plano de corte

TIPOS DE CORTE

CORTE TOTAL



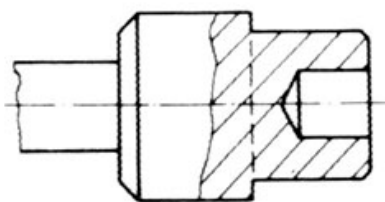
Sec. A-A



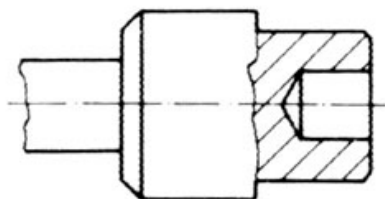
Sec. A-A

TIPOS DE CORTE

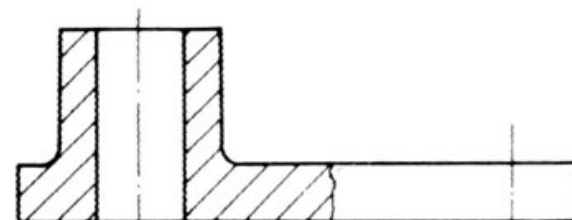
CORTE PARCIAL



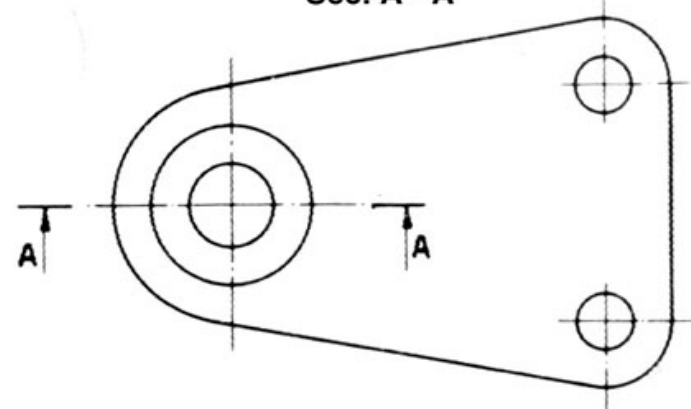
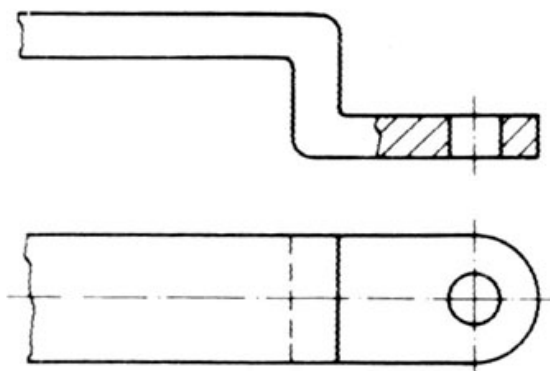
SIM



NÃO

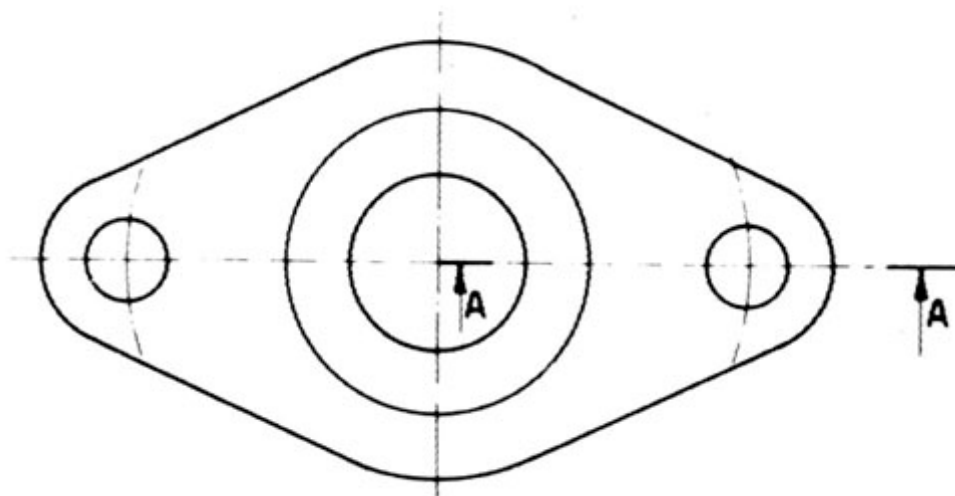
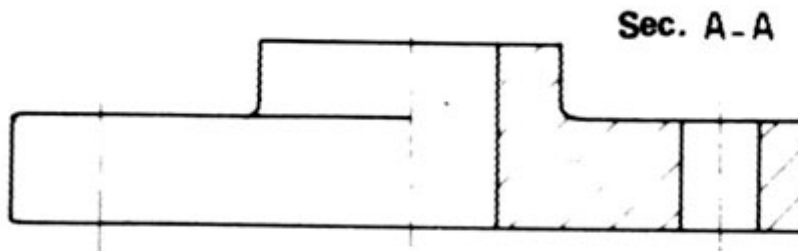
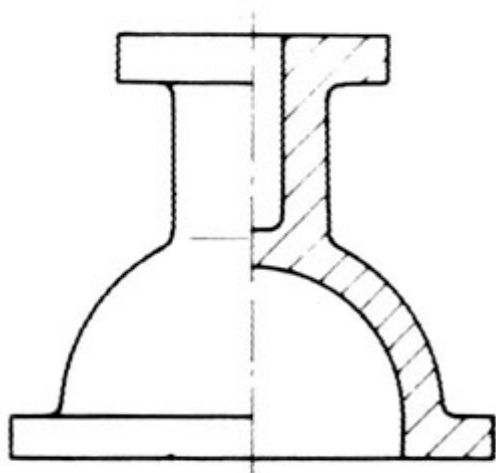


Sec. A - A



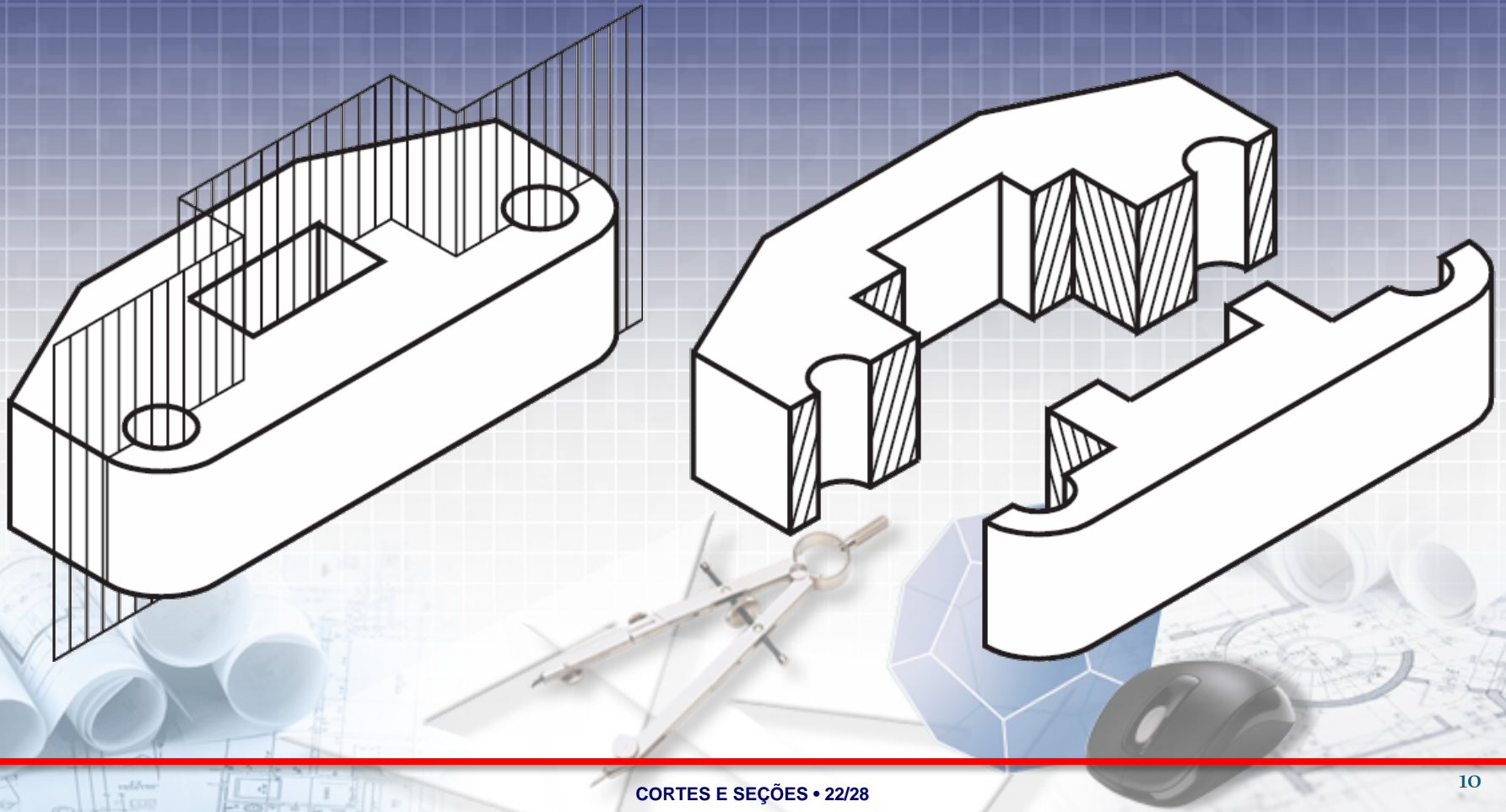
TIPOS DE CORTE

MEIO CORTE



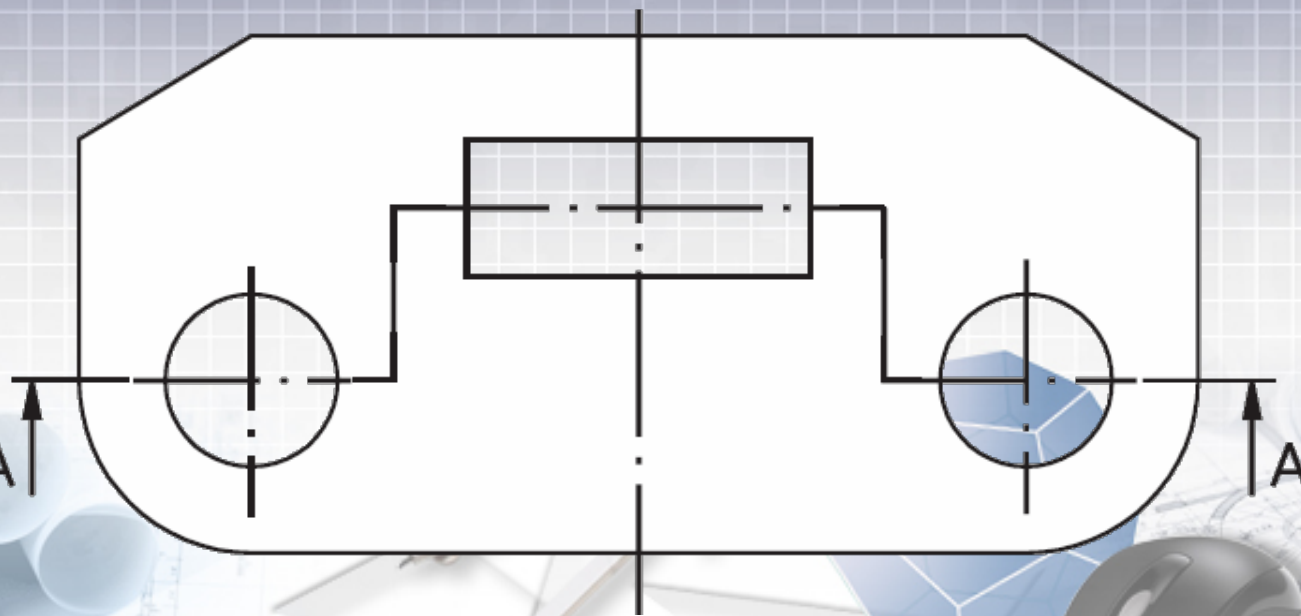
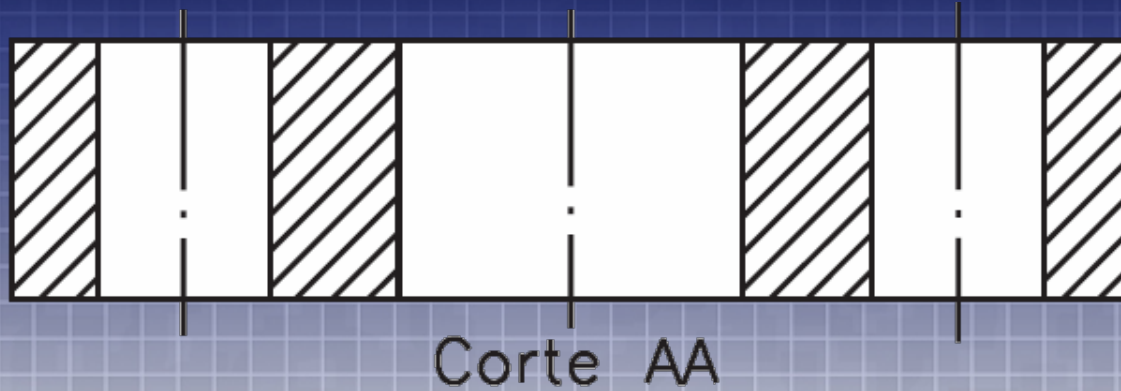
TIPOS DE CORTE

CORTE EM DESVIO OU COMPOSTO



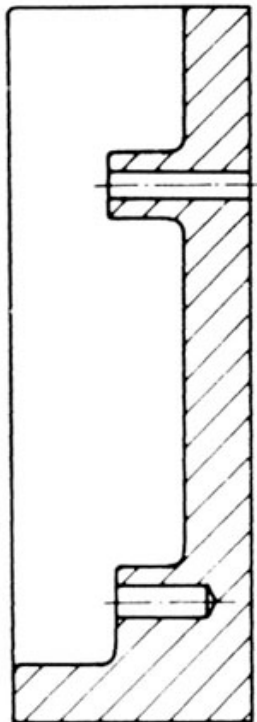
TIPOS DE CORTE

CORTE EM DESVIO OU COMPOSTO

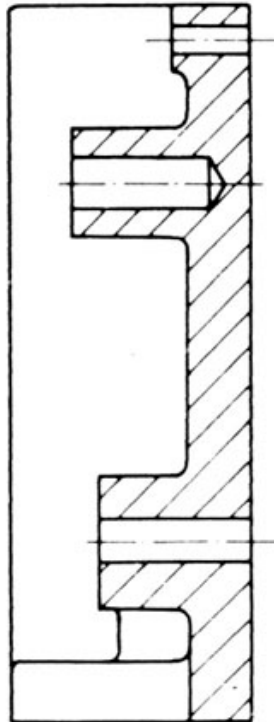


TIPOS DE CORTE

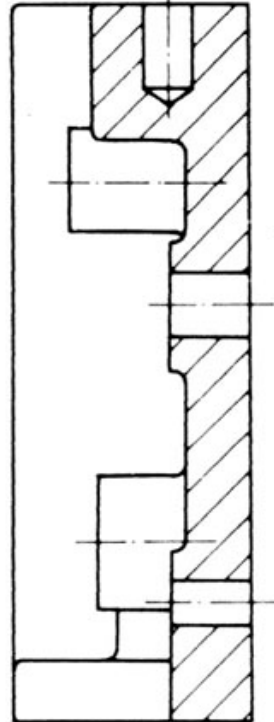
CORTE EM DESVIO OU COMPOSTO



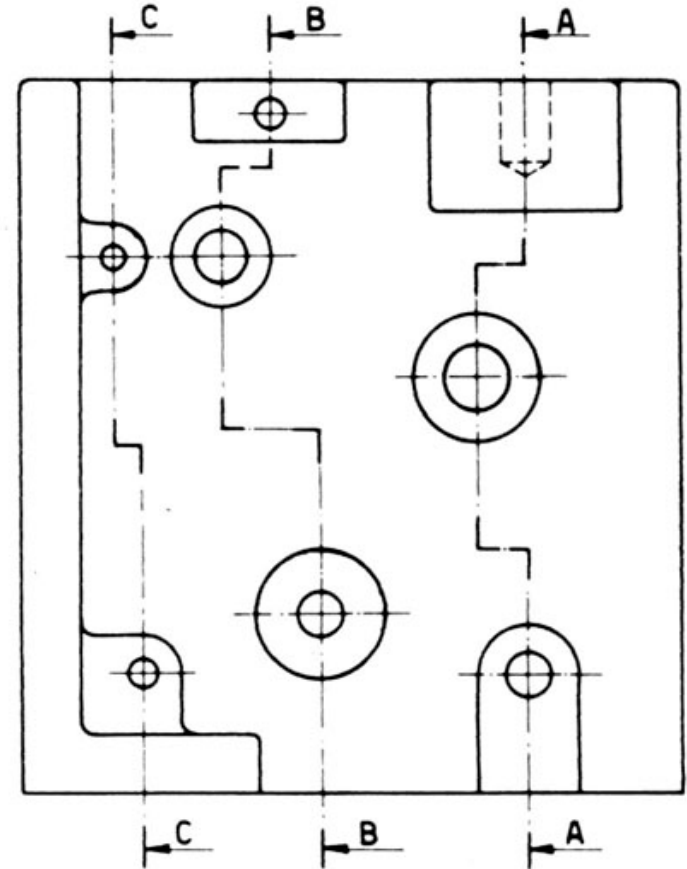
Sec. C-C



Sec. B-B



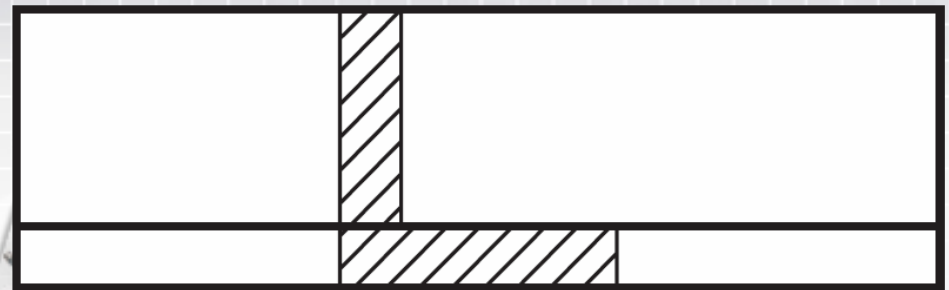
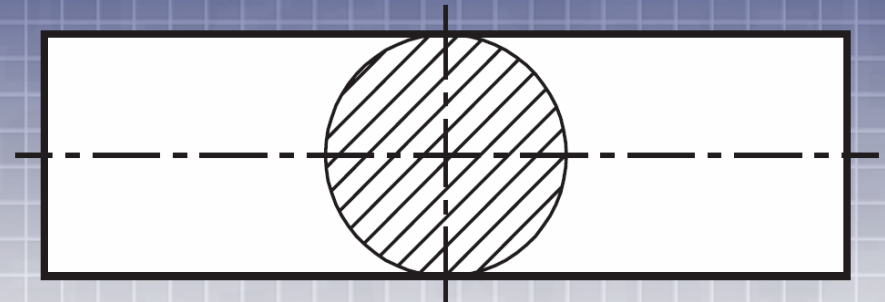
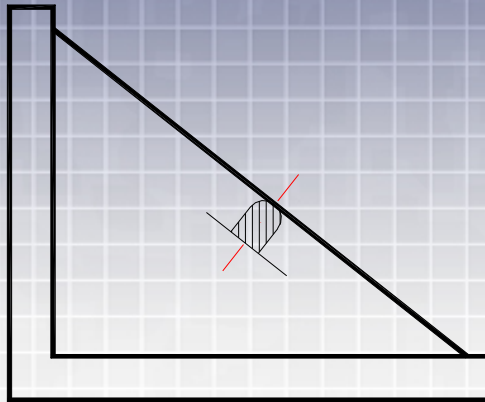
Sec. A-A



TIPOS DE CORTE

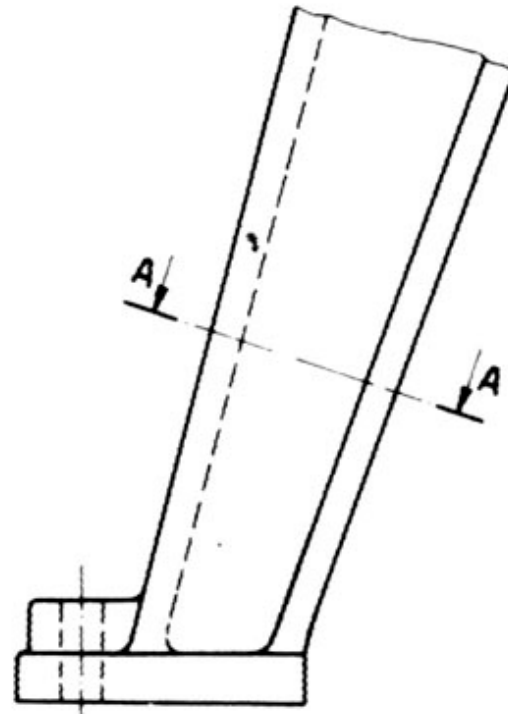
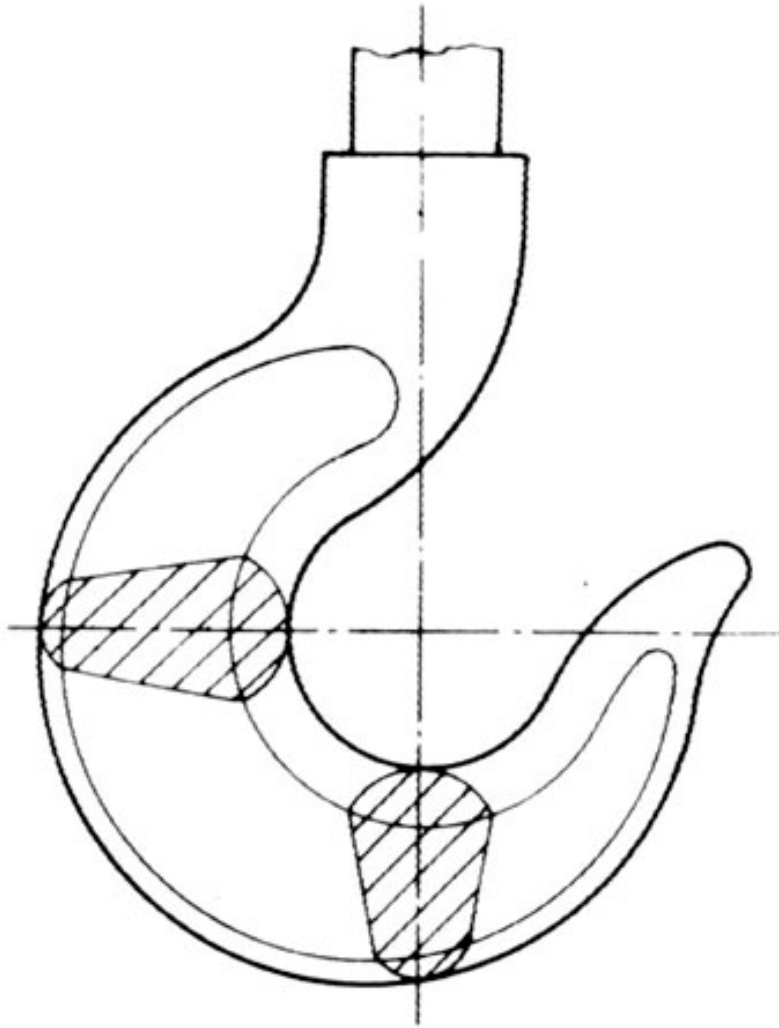
SEÇÃO DENTRO DA VISTA

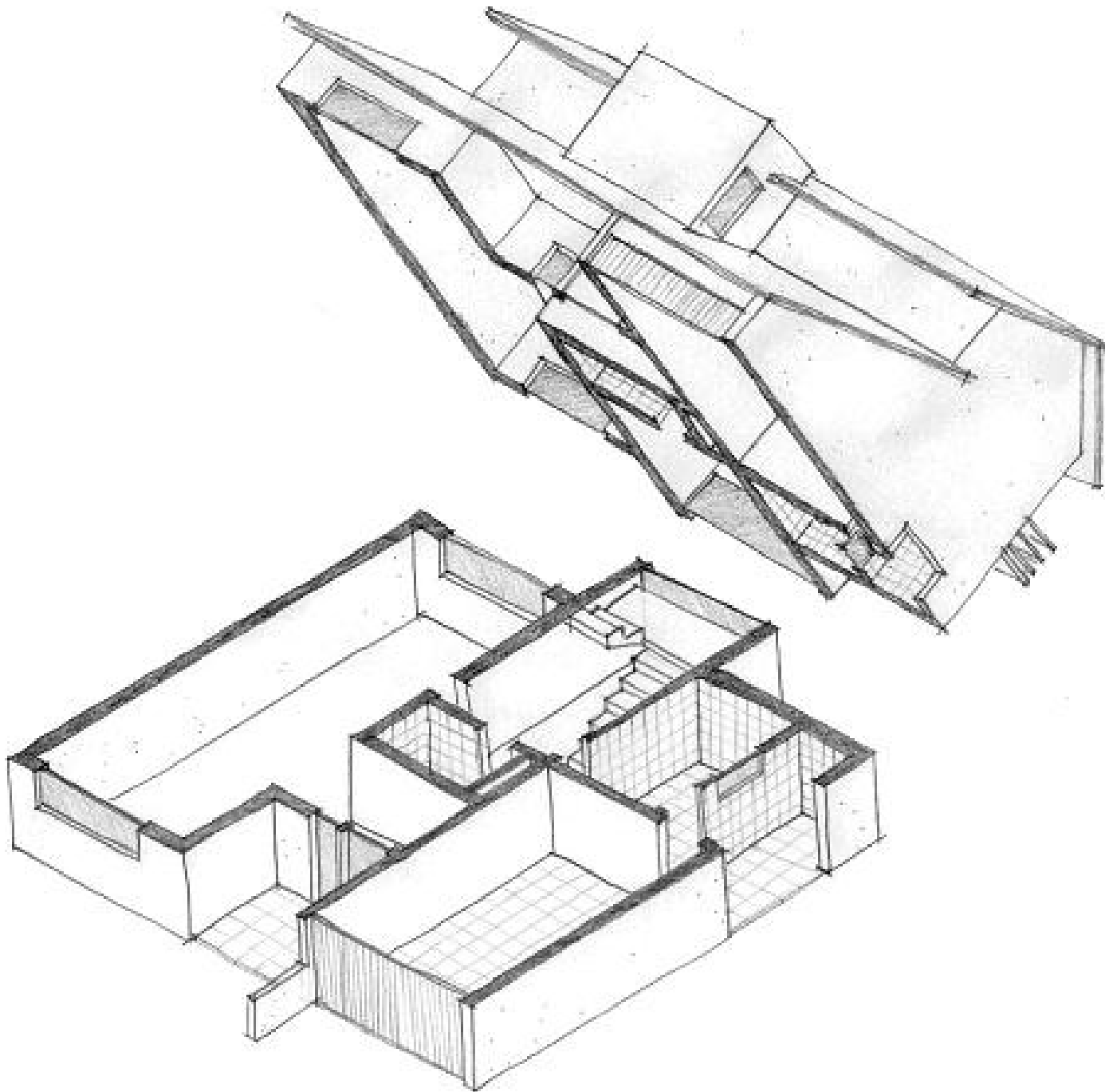
Pode ser usada de modo a simplificar ainda mais o desenho do objeto

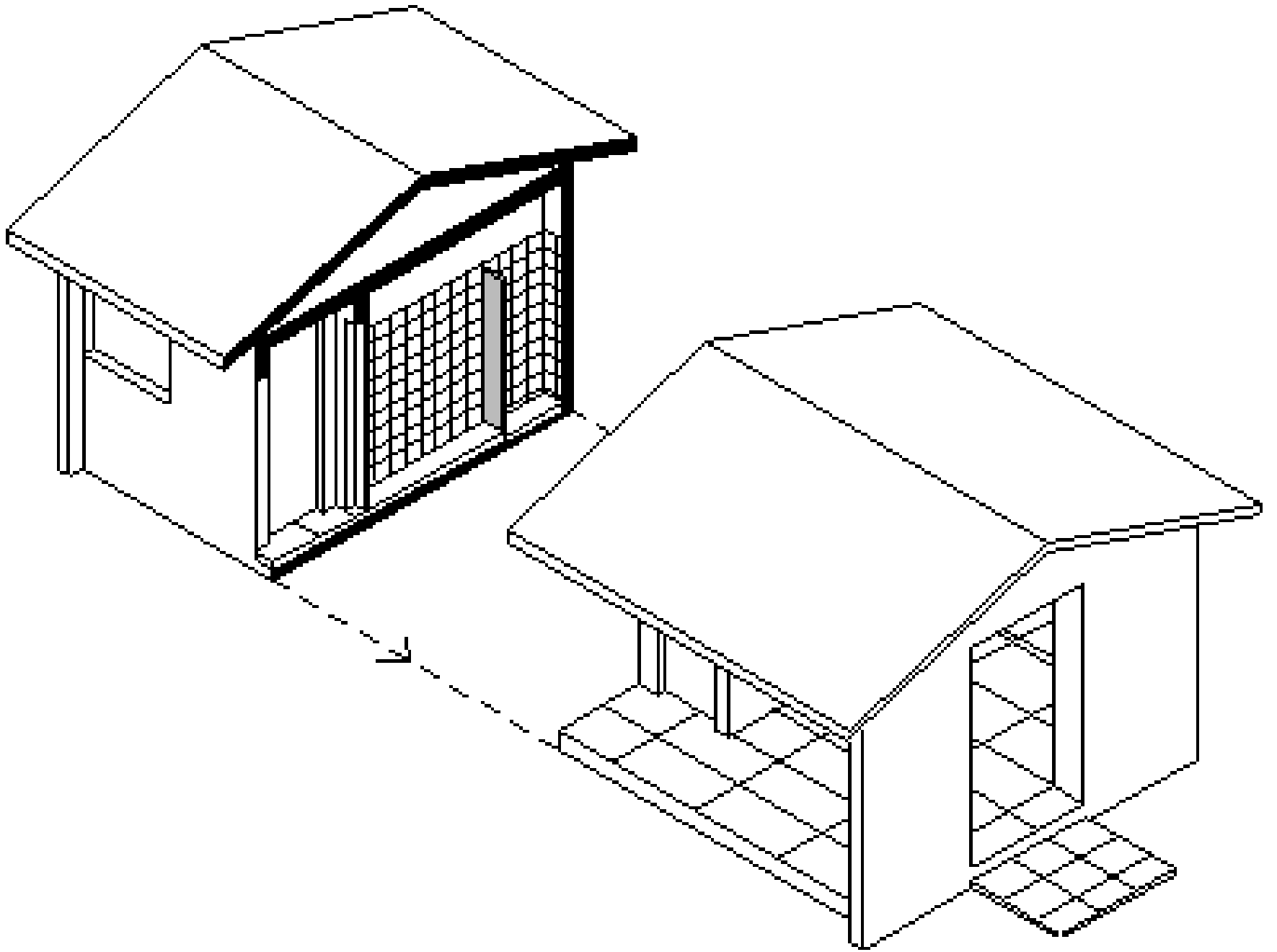


TIPOS DE CORTE

SEÇÕES DENTRO OU FORA DA VISTA







ASPECTOS IMPORTANTES NA REPRESENTAÇÃO DE DESENHOS EM CORTE

- Utilizar linhas traço ponto demonstrando onde foi feito o corte
- Deve-se engrossar estas linhas no seu final e colocar setas para representação do corte
- Deve-se evitar a representação de linhas ocultas no corte.



ASPECTOS IMPORTANTES NA REPRESENTAÇÃO DE DESENHOS EM CORTE

- Deve-se hachurar toda a área seccionada do corte (seguindo regras como tipo de material, etc)
- O traçado da hachura deve ser feito de preferencia à 45°
- Utilizar a hachura sempre no mesmo sentido modificando-a somente na representação de mais de uma peça.

